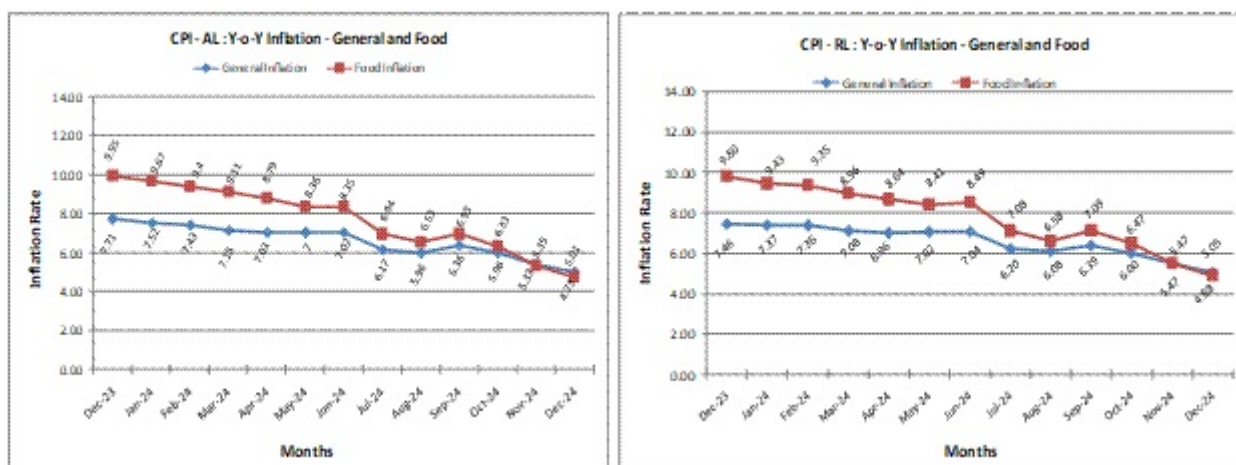


ALL-INDIA CONSUMER PRICE INDEX NUMBERS FOR AGRICULTURAL AND RURAL LABOURERS – DECEMBER, 2024

Posted On: 23 JAN 2025 4:22PM by PIB Delhi

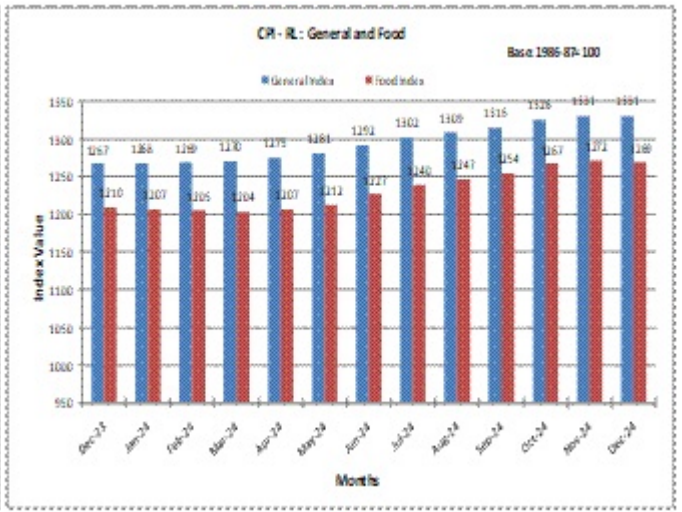
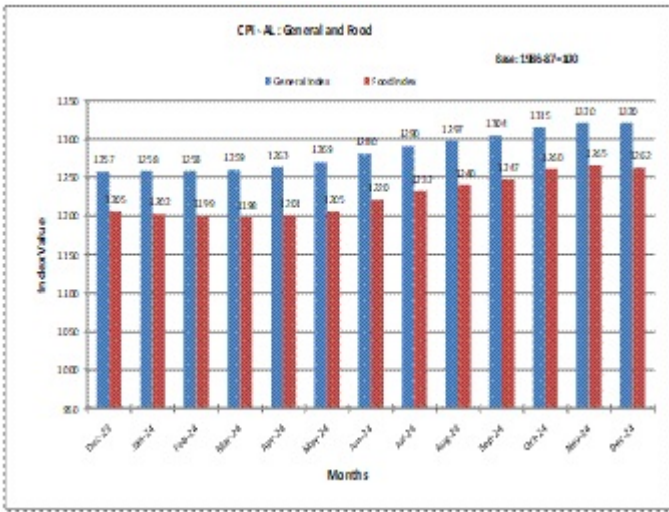
The All-India Consumer Price Index for Agricultural Labourers (CPI-AL) and Rural Labourers (CPI-RL) (Base: 1986-87=100) remained unchanged for the month of December 2024 at 1320 and 1331 points respectively.

The year-on-year inflation rates based on CPI-AL and CPI-RL for the month of December, 2024 were recorded at 5.01% and 5.05%, respectively, compared to 7.71% and 7.46% in December, 2023. The corresponding figures for November, 2024 were 5.35% for CPI-AL and 5.47% for CPI-RL.



All India Consumer Price Index (General and Group-wise):

Group	Agricultural Labourers		Rural Labourers	
	November, 2024	December, 2024	November, 2024	December, 2024
General Index	1320	1320	1331	1331
Food	1265	1262	1272	1269
Pan, Supari, etc.	2086	2093	2095	2100
Fuel & Light	1375	1382	1366	1372
Clothing, Bedding & Footwear	1326	1329	1389	1392
Miscellaneous	1373	1376	1374	1377



Himanshu Pathak

(Release ID: 2095463)